



**KEY-LINK™**  
FENCING & RAILING

# CABLE RAILING





# EXCEPTIONAL STYLE, OUTSTANDING PERFORMANCE.

If you're dreaming of beautiful, stress-free outdoor living spaces, our low-maintenance aluminum railing, designed to provide long-lasting attractiveness and safety, is one way to make that outdoor dream a reality. With its wide variety of colors and styles, Key-Link's aluminum railing is appreciated by homeowners and builders alike. All of Key-Link's railing is engineered to our exacting standards and fabricated and tested in the USA.



## Manufactured in the USA

Key-Link's products are proudly designed and manufactured in the USA to ensure a quality fit and finish.

# WHAT IS KEY-LINK QUALITY?

- AAMA 2604 standard powder coating on railing and accessories to promote weatherability, with AAMA 2605 standard available for additional protection
- IBC or IRC code compliance for peace of mind and safety
- High-quality aluminum with vinyl inserts to hold balusters snugly and prevent rattling
- Limited lifetime warranty and 5-year prorated labor warranty

## Contents

Horizontal Cable.....	4-9
Vertical Cable.....	10-13
Post Caps, Trim.....	14
Posts, Porch Posts.....	14
ADA Handrail.....	15
External Cable Fittings.....	16-17
Placid Point Lighting.....	18-19

*Pictured above:  
Textured Black with Horizontal Infill*

HORIZONTAL CABLE

# A MODERN VIEW

Sleek and modern horizontal cable continues to be one of the most popular choices on the market. Contractors appreciate Key-Link's system for its ease of installation; homeowners love the look and maintaining their unobstructed views.





2 1/2" Posts Now Available

# HORIZONTAL CABLE

## PRODUCT DETAILS

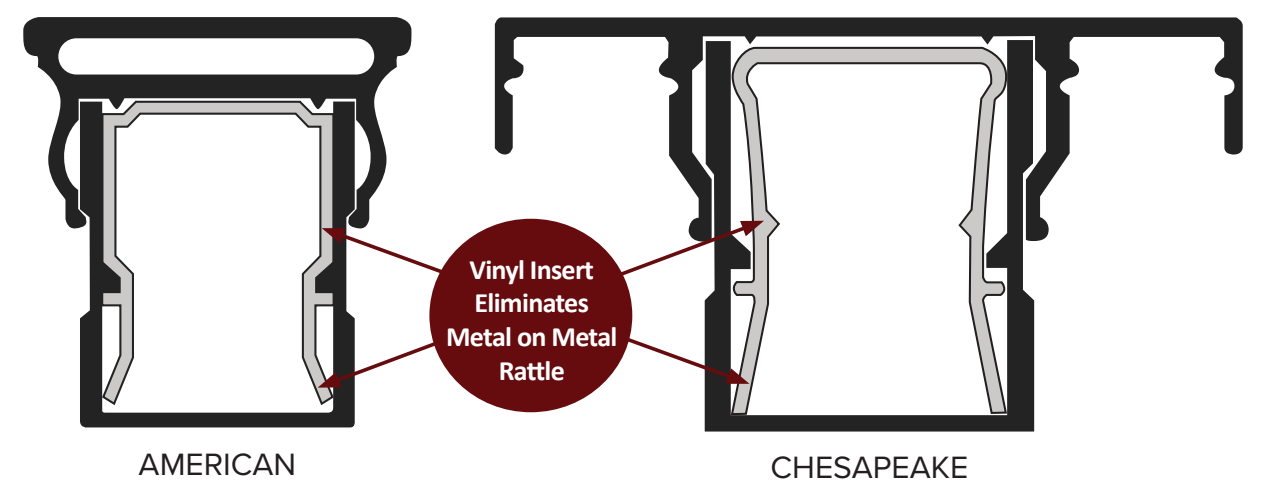
- Available in 36" & 42" h x 6' & 8' sections
- Pre-drilled line, corner, and end posts
- Requires only single post at corners
- Meets IRC and IBC (42" only) code requirements
- Comes as a boxed section with center baluster and top rail (cable rolls available separately)

*Pictured Above:*  
 a. Chesapeake in Matte White  
 b. American in Textured Black  
 c. American in Matte Black

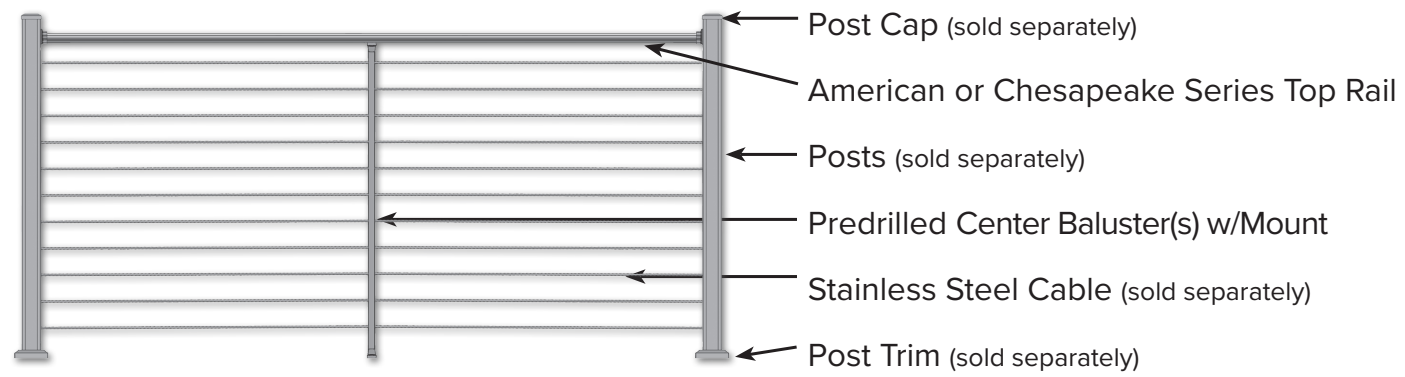
## STANDARD COLORS



## RAILING STYLES



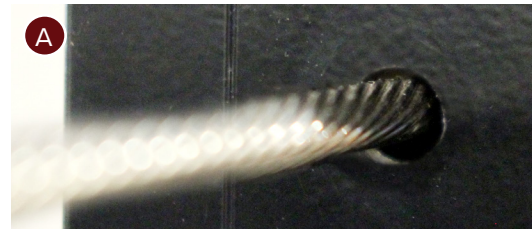
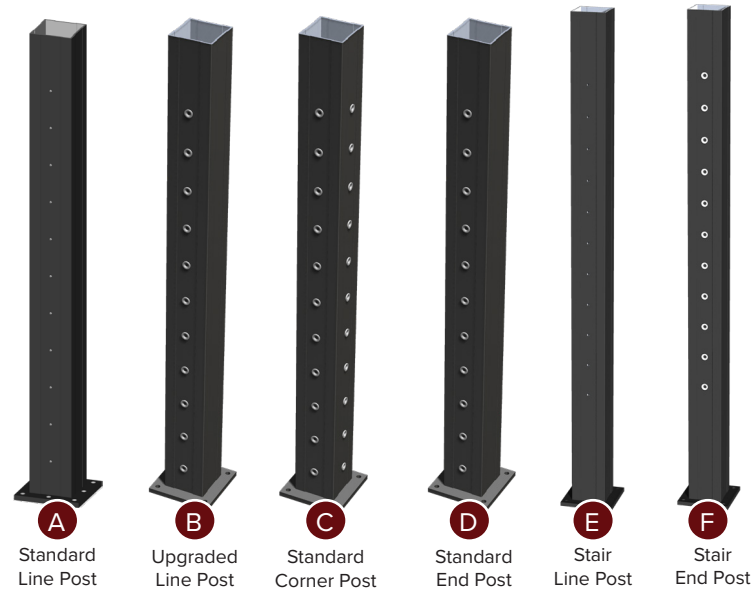
## HORIZONTAL CABLE SYSTEM



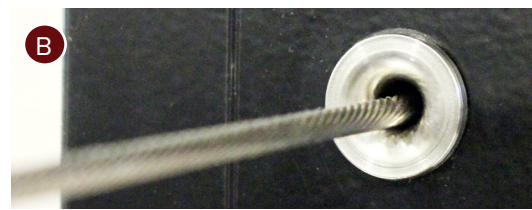
### Railing Boxed Section Includes:

American or Chesapeake Top Rail, Center Baluster(s) & Mounts, Top Rail Mounting Brackets  
Cable, posts, caps and trim sold separately.

## AVAILABLE POST OPTIONS



Used on level surfaces with no cable angle changes.



Use the upgraded line post any time your cable is angled between 90° and 180°, for transitions down stairs, or for a cohesive stainless steel aesthetic.



## STAINLESS STEEL CABLE

### Stainless Steel Cable

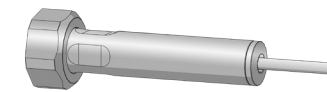
Our Cable is Made From Grade 316 Stainless Steel & Features a 1/8" Diameter w/1 x19 Strand Construction.



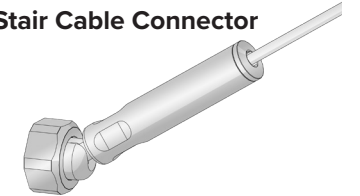
## EXTERNAL CABLE FITTINGS

Designed for use in wood post or composite post projects.

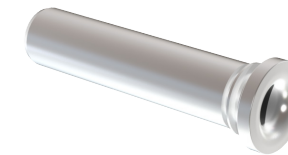
### Level Cable Connector



### Stair Cable Connector



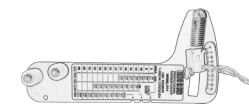
### Cable Through Sleeve



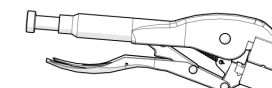
For use on new construction or retrofit projects.



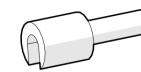
## INSTALLATION TOOLS



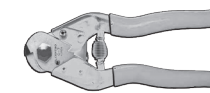
Tension Gauge



Cable Vise Grip



Cable Release Key



Cable Cutter



Cable Needle

## CLEANERS & PROTECTANT\*



Stainless Steel & Chrome Cleaner

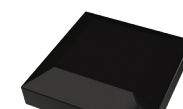


Stainless Steel Cleaner & Protectant

\*For preventative care and cleaning.

See the cable rail cleaning guidelines on our website for more information.

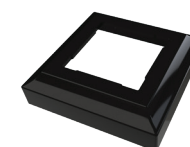
## POST CAPS AND TRIM



Post Cap



Ball Cap



Post Trim



Two Piece Post Trim

## STRUCTURAL PORCH POSTS



Line Porch Post Drilled



End Porch Post with Pre-Installed Fittings



Corner Porch Post with Pre-Installed Fittings

VERTICAL CABLE

# A FRESH TAKE

For those who want cable with a different spin, Key-Link's vertical cable system is the premiere choice. The cable comes pre-installed from our plant for installers' convenience, and the addition of stainless steel support balusters give it a seamless contemporary style that homeowners love.





a



b



c

# VERTICAL CABLE

## PRODUCT DETAILS

- Available in 36" & 42" h x 6' & 8' sections
- No drilling required for standard installations
- Cable comes pre-installed
- Meets IRC and IBC (42" only) code requirements
- Conveniently boxed as a section

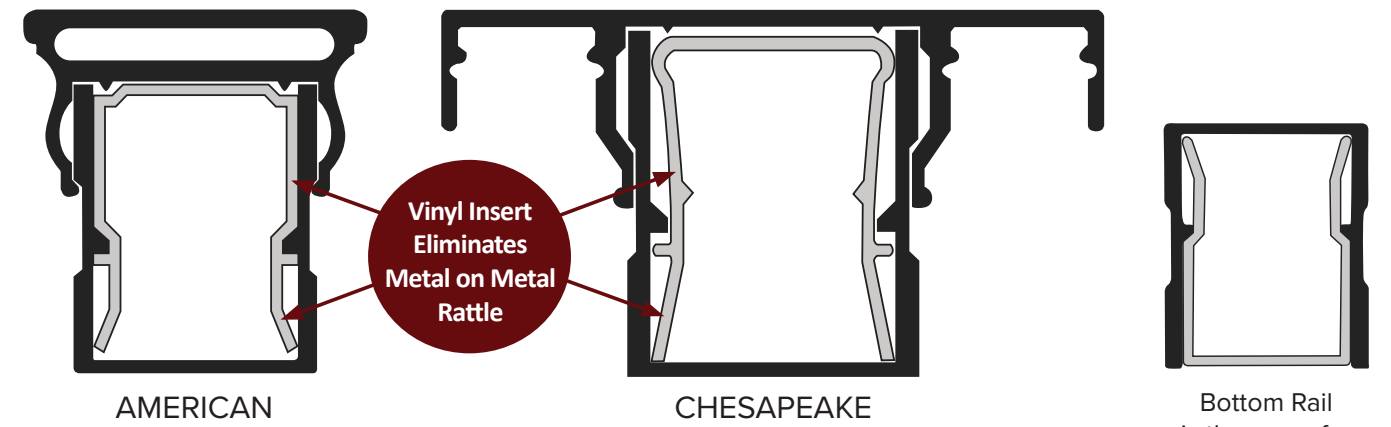
*Pictured Above:*

- a. American in Textured Black
- b. American in Textured Black
- c. American in Textured Black

## STANDARD COLORS



## RAILING STYLES



AMERICAN

CHESAPEAKE

Bottom Rail is the same for both series

## FASCIA MOUNT BRACKETS

Available for both 2½" and 3¼" posts

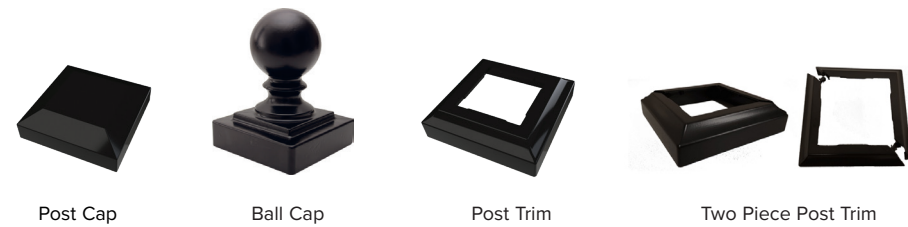


### STANDARD COLORS

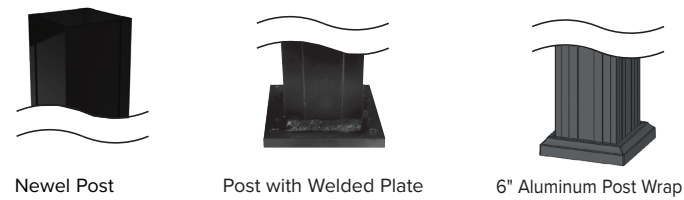


Special order colors also available.

## POST CAPS & TRIM

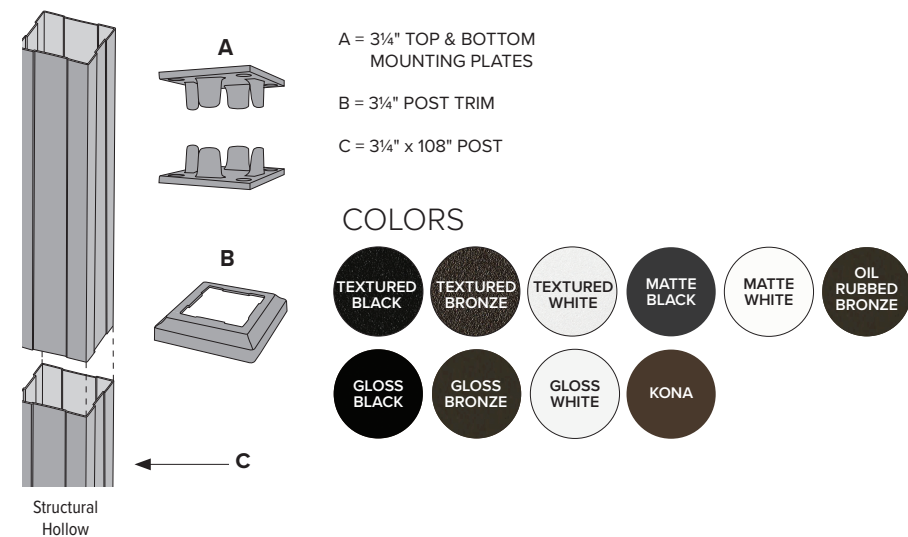


## POSTS, POST WRAP



## PORCH POSTS
















3¼" & 4" Structural Porch Posts



## ADA ALUMINUM HANDRAIL

ADA Aluminum Handrail adds safety and security without compromising on looks! This handrail is designed to coordinate perfectly with Key-Link's existing railing for a beautiful, functional, and safe railing system.



- A** END CAP 
- B** P- LOOP RETURN 
- C** ADA HANDRAIL BRACKET 
- D** HANDRAIL CONNECTOR WITH RING 
- E** 5° RADIUS ELBOW (24") 
- F** 34° RADIUS ELBOW (24") 
- G** STRAIGHT HANDRAIL (104") 
- H** 90° RADIUS ELBOW (24") 
- I** 6" CORNER MOUNTING BRACKET 
- J** 0° - 90° UNIVERSAL ELBOW 
- K** OUTSIDE ELBOW 
- L** ALUMINUM 90° ELBOW BRACKET 
- M** STRAIGHT ALUMINUM WALL BRACKET WITH RING 
- N** ALUMINUM GATE RETURN (+ O) 
- O** UNIVERSAL ELBOW HANDRAIL BRACKET 

### STANDARD COLORS



### SPECIAL ORDER COLORS





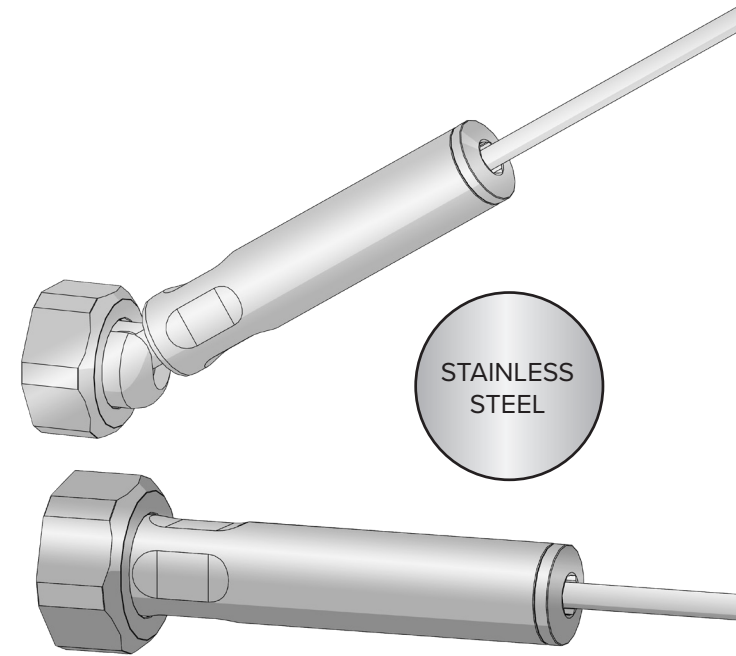


EXTERNAL  
CABLE FITTINGS

# GIVE YOUR VIEW AN UPGRADE

Cable fittings allow you to turn wood, aluminum, composite, or masonry posts into vehicles for beautiful on-trend horizontal cable railing.

These slimmed down fittings have full tensioning capacity for safety and security and require only a few standard tools for installation.



Stair and level fittings available.



# BRING YOUR SPACE TO LIGHT

Create stunning focal points and add atmosphere and safety to your outdoor living space with lighting. Key-Link's lighting is designed to pair with railing for a beautiful, seamless look. Post cap and accent lights are made from diecast aluminum and powder-coated with the same coating and color, which means both posts and lights will retain their color in the same way.

Key-Link's electrical engineers and experts have refined our lights for a long-lasting and easy-to-use system that brings exceptional outdoor lighting to your deck or porch.



## STANDARD COLORS

Powder-coated die-cast aluminum



## SPECIAL ORDER COLOR OPTIONS

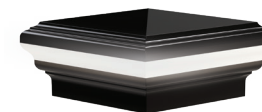


## POST & ACCENT LIGHTS

Sizes available for 2½", 3¼" and 4" Posts

### POST CAP LIGHTS

3000k LED



PYRAMID



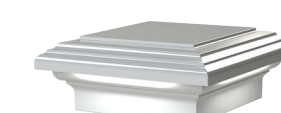
DECORATIVE

### POST CAP DOWNLIGHTS

3000k LED



PYRAMID



DECORATIVE

### POST & STAIR ACCENT LIGHT

3000k LED



### POST CAPS (NO LIGHTS)

PYRAMID



DECORATIVE

### UNDER RAIL LIGHTING



Only available for Chesapeake Series

## LIGHTING ACCESSORIES

### LIGHTING CONTROL HUB & POWER SUPPLY



- Timer lets you choose 1-9 hours of light, or dusk-to-dawn
- Dimmer mode with 9 brightness levels
- Adjustable photocell sensor to control for ambient light
- **Walk Away** feature for safe exiting before lights go out
- Aluminum housing to match railing
- Power Supply available in 60w or Power Station

### POST LIGHT WIRE KIT

- KIT INCLUDES:
- Staples
  - 2-way splitter
  - 5' and 9' wire extensions

### WIRE EXTENSIONS, WIRE SPLITTERS

- WIRE EXTENSIONS:
- 2', 5', 9' Lengths Available
- WIRE SPLITTER KITS:
- 2-Way Kit: Includes (1) 8" input cable to (2) 8" output cables
  - 3-Way Kit: Includes (1) 8" input cable to (3) 10" output cables

### 2" POST ADAPTER

- Made to fit fence posts
- Fits 2" Posts
- Uses 2½" Cap for 2" Post





**KEY-LINK™**  
FENCING & RAILING



[keylinkonline.com](http://keylinkonline.com)

260 Jalyn Drive, New Holland, PA 17557

717-355-7130 // Toll Free: 888-704-7130

Fax: 717-355-7139

© 2023 Key-Link Fencing & Railing | KFRMK230101