

MADE  
IN THE  
USA



**Westbury**<sup>®</sup>  
aluminum railing

# LIBERTY **S10**



CCRR-0214 Complies with IRC

# SPECIFICATIONS

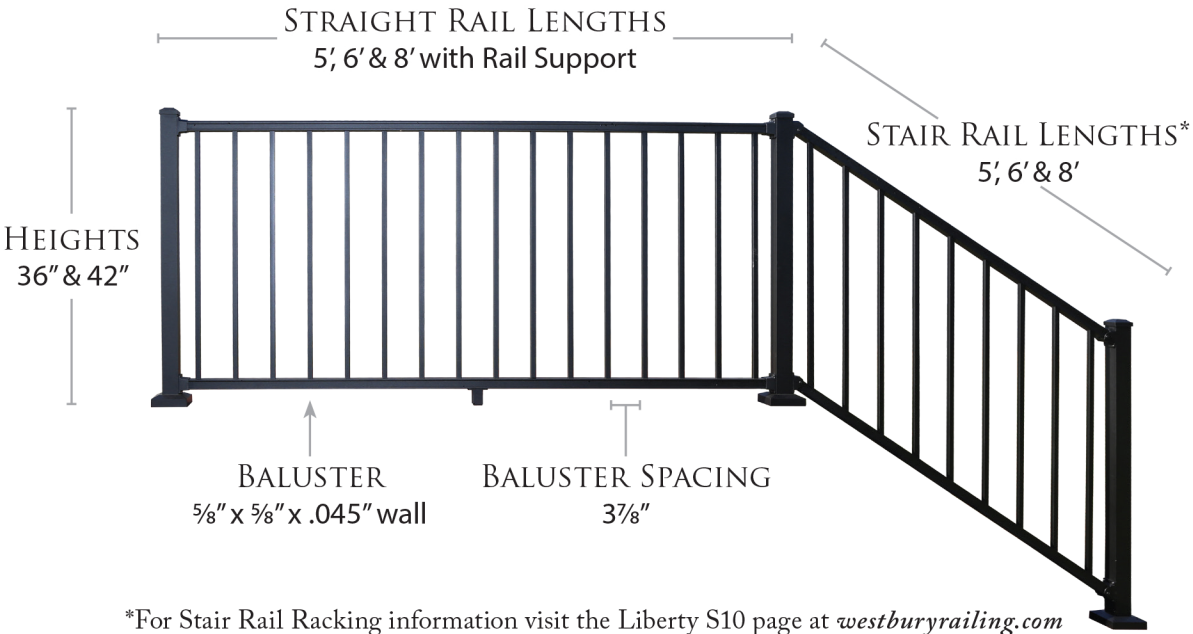
Westbury® Liberty S10 is designed for International Residential Code Projects. IRC Projects include Multi-Family Homes comprised of duplexes (two-family homes) and buildings with three or more townhouse units. All buildings within the scope of the IRC are limited to three stories above grade.



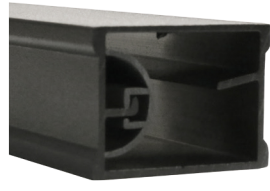
- **Streamlined System**  
5/8" Square Balusters and Stylish Rails compliment Multi-Family Housing Projects.
- **4-Way Adjustable Posts**  
Posts include a leveling feature for uneven surfaces.
- **Quick Installation**  
Available in Boxed Kits
- **Boxed Kits Include Brackets**  
Available in 36" & 42" Heights. Level and Stair lengths include 5', 6', & 8' sections.

# S10

# LIBERTY



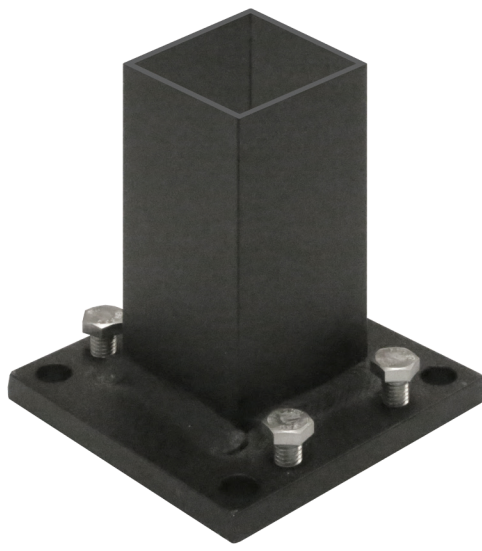
STYLISH TOP RAIL  
1 3/4" w x 1 3/8" h



BOTTOM RAIL  
1 3/4" w x 1 1/4" h



HEAVY DUTY 2" POST  
IRC .093 Wall  
1/2" h x 3 7/8 sq. plate



STANDARD 2" POST  
.090 Wall  
3/8" h x 3 7/8 sq. plate



# FEATURES

STANDARD MOUNTS



Top Rail

Bottom Rail

STAIR MOUNTS



Top Rail Down

Top Rail Up

Bottom Rail Universal

45° ANGLE MOUNTS



Top Rail Right

Top Rail Left

Bottom Rail Universal

STAIR SWIVEL MOUNTS



Top Rail

Bottom Rail

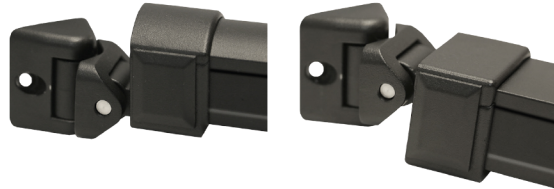
ANGLE SWIVEL MOUNTS



Top Rail

Bottom Rail

DOUBLE SWIVEL MOUNTS



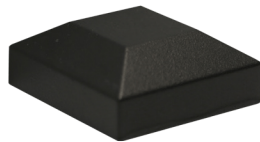
Top Rail

Bottom Rail

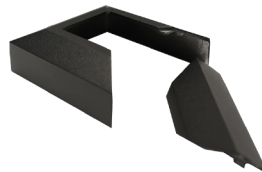
ADDITIONAL PARTS AND ACCESSORIES



Ball Cap



Flat Cap



Two-Piece Flare



Bottom Rail Support

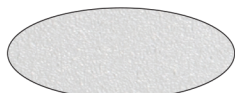
**POWDER COATING COLORS**

**AAMA 2604**

Liberty S10 is offered in 6 standard colors to compliment your project; from satin colors to textured colors. This is the highest quality powder coating on the market. Our **Lifetime Limited Warranty** gives you peace of mind in your investment.



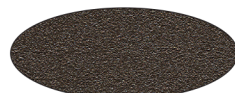
Gloss White



White Fine Texture



Ninety Bronze



Bronze Fine Texture



Satin Black



Black Fine Texture

S10  
LIBERTY

# POWDER COATING



1

The raw premium-grade aluminum is inspected to be free of blemishes and is not exposed to the outdoor elements.



2

The product enters a heated acidic cleaning stage to remove extrusion debris and fabrication oils.



3-6

**CLEAN:** City water rinse  
**CLEANER:** Recycling reverse osmosis water rinse  
**CLEANEST:** Pure reverse osmosis water rinse  
**SEALER:** Dried-in-place aluminum sealer



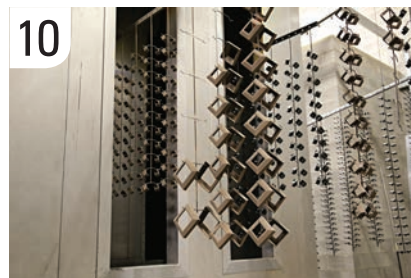
7-8

A 200 MPH air blast removes water drops from the pre-treated aluminum. A convection oven completes the dry-off process.



9

Powder is applied with 18 automated and 2 manual spray guns. Compressed process air is dried to -35°F Dew Point for superior adhesion.



10

The powder coating is then bonded and adhered to the aluminum sub-straight in a 400 degree cure stage.

The powder coating application booth produces zero VOC emissions. Powder is stored and applied in a climate controlled positive pressure environmental room. Ten pre-treat system titration checks twice per shift maintain system parameters and ten QC checks are completed every hour on product coming off the powder-coating line. Parts are not touched by human hands during the pre-treat, dry-off, application and cure process to maintain ultimate cleanliness of powder-coated parts.



DSI is a PCI 4000 certified and verified AAMA 2604 and AAMA 2605 compliant powder coating applicator. The powder coating process is accredited by the American Architectural Manufacturing Association and the Powder Coating Institute. Our powder coating is custom blended from a Super Durable Polyester TGIC (Triglycidyl Isocyanurate) resin-base, using premium pigmentation to meet AAMA 2604 specifications. Our AAMA 2605 is a fluorocarbon polymer resin system.



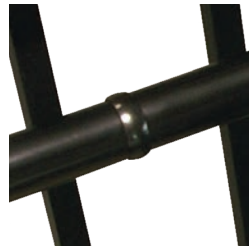
# CHR

**Continuous Handrail**  
**ALUMINUM**

## ADA Compliant Handrail

A variety of rail lengths and accessories complete this system. Available in 8', 10', & 16' Rail Lengths.

Available in all the colors shown on page 5.



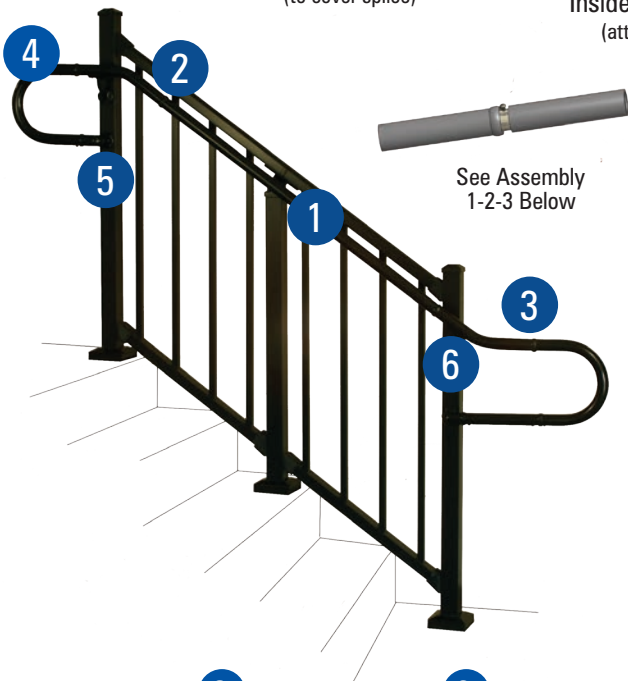
Collar Ring  
(to cover splice)



Inside Corner Mount  
(attaches to post)



Wall Mount



1-3/8" Handrail



Internal Connector



Collar Rings  
(to cover splice)



180° Elbow



Wall Return



Adjustable Elbow



90° Elbow



Inside Corner Mount  
(attaches to post)



Internal End Cap



Wall Mount



Extended  
Wall Mount



Wall-End Mount

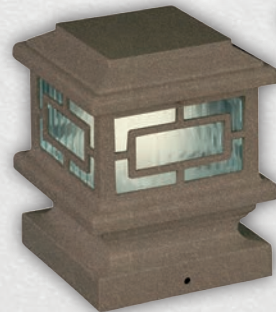
Additional components may be available. Contact Customer Service for more information.



# ScreenRail



## — DSI FAMILY OF PRODUCTS —



westburyrailing.com

We have tried to make this catalog comprehensive and factual. We reserve the right to discontinue at any time, without notice, colors, materials, equipment and availability. Since some information may have been updated since the time of printing, we are not responsible for typographical or pictorial errors. Materials shown may vary slightly from actual colors. ©Digger Specialties 2017 SP 04/17 99776